



**Barcelona
Supercomputing
Center**
Centro Nacional de Supercomputación



Programming Distributed Computing Platforms with COMPSs

Pol Alvarez, Javier Alvarez, Ramon Amela, Rosa M. Badia, Javier Conejero, Marc Dominguez, Jorge Ejarque, Daniele Lezzi, Francesc Lordan, Cristian Ramon-Cortes, Sergio Rodriguez

Workflows & Distributed Computing Group

29-30/01/2019

Barcelona

How to debug COMPSs Applications



**Barcelona
Supercomputing
Center**
Centro Nacional de Supercomputación

Where are the logs?

- Application stdout/stderr
 - Console
 - Main application errors. Notification of Job Failures
- Task executions (Jobs) stdout/stderr
 - `$HOME/.COMPSSs/<app_name_XX>/jobs`
- COMPSSs Runtime log
 - Runtime Exception or Unexpected errors
 - Master: `$HOME/.COMPSSs/<app_name_XX>/runtime.log`
 - Worker: `$HOME/.COMPSSs/<app_name_XX>/workers`
or during the execution at
`/<working_dir>/<uuid>/<node_name>/logs`
- More debug messages
 - `runcompss -d` or `runcompss --debug`



Demo

- Common errors:
 - Exceptions
 - In main code
 - Within a task
 - Usage of non-serializable objects
 - As a parameters
 - As a return
 - Connectivity problems
 - The master can not connect to the worker
 - The worker can not connect to the master

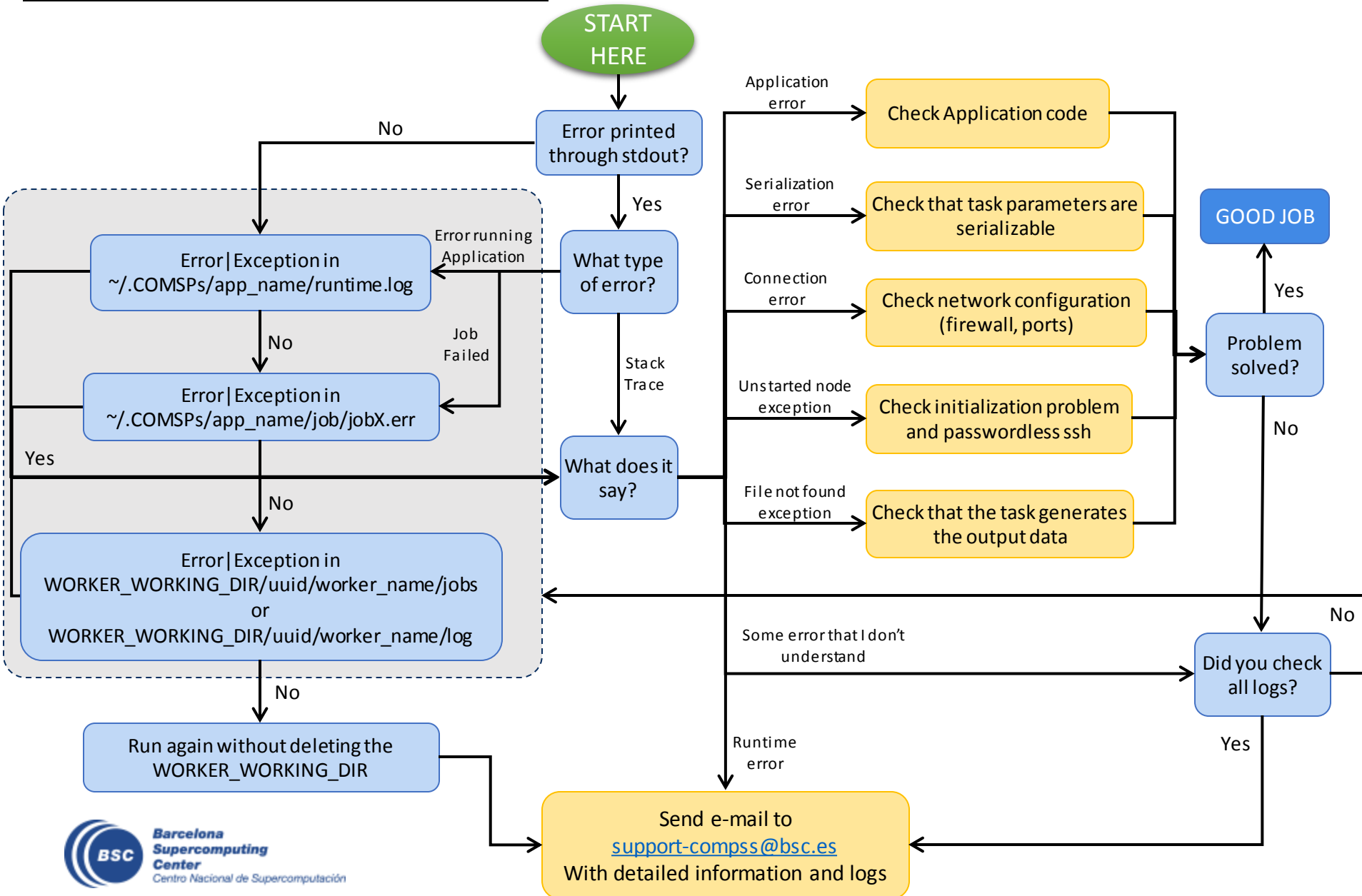


Default log locations:

MASTER LOGS: ~/.COMPSs

WORKER_WORKING_DIR = /tmp/COMPSsWorker/

Debugging process





**Barcelona
Supercomputing
Center**
Centro Nacional de Supercomputación



EXCELENCIA
SEVERO
OCHOA

THANK YOU!

support-compss@bsc.es

www.bsc.es